

SHARPER IMAGE®



PURIFY 9

AIR PURIFIER

OWNER'S GUIDE



MODEL
PURIFY 9

CONTENTS

Important Safety Instructions.....	4
Product Information.....	9
Control Panel.....	10
How to Use.....	11
Visual Air Quality Indicator.....	14
True HEPA Filtration.....	15
Filter Replacement.....	16
Tips.....	18
Cleaning & Storage.....	19
Troubleshooting.....	20
Warranty.....	21

READ AND SAVE THESE INSTRUCTIONS

IMPORTANT SAFETY INSTRUCTIONS

This owner's guide and any additional inserts are considered part of the product. They contain important information about safety, use and disposal. Before using the product, please familiarize yourself with all operating and safety instructions. Please keep all documents for future reference and pass these documents on, together with the product, to any future owner. See sihomecomfort.com to view, download and print the most current version of these instructions.

INTENDED USE: This product is intended to purify the air in indoor living spaces only in the United States and Canada. This product is not intended for commercial or industrial use. The manufacturer assumes no responsibility for damage or injury due to the unauthorized use or product modification. Failure to follow these directions will void the product warranty. This product is intended to be used on the floor and not on an elevated surface such as a table or desktop.

WARNING: Risk to Children and Impaired Persons

- Supervision is required during the installation, operation, cleaning and maintenance of this product by children age 12 years and younger and anyone with reduced physical, sensory or mental capabilities. Children should be supervised to ensure that they do not play with the appliance, its parts and packaging material.

INSTALLATION WARNING—To reduce risk of fire, electrical shock and injury to persons, observe the following:

- Place this product away from curtains, draperies, tablecloths and

other fabrics, since they may be drawn into the product, damage the motor and/or cause a fire.

- No part of this product (the appliance, power cord, plug, packaging, etc.) should be placed near furnaces, fireplaces, stoves or other high temperature heat sources. Do not use this product in a window, on an uneven or unstable surface, or near water.
- The appliance, power supply, power cord and plug cannot come into contact with water. Do not use this product on wet surfaces. Do not use this product in a bathtub or shower or position product where it may fall into a bathtub, laundry, swimming pool or other water container. Do not use this product outdoors or expose it to weather or elements.
- Do not run cord under carpeting. Do not cover cord with throw rugs, runners, or similar coverings. Do not route cord under furniture or appliances. Arrange cord away from traffic area and where it will not be tripped over.
- The cord should not hang over edges of counters or be placed where it can be crimped or closed in doors. Place appliance near an easily accessible outlet so the product can be unplugged quickly during an emergency.

SAFE USE WARNING—To reduce risk of fire, electrical shock and injury to persons, observe the following:

- **WARNING:** To reduce likelihood of circuit overload, fire and electric shock, do not operate with a solid state speed device, such as a dimmer control switch.
- Do not operate unit if the unit has been dropped or damaged. Do not use this product if it has a damaged power cord or plug. To avoid risk of electrical shock, do not attempt to repair or replace parts. Only original replacement parts may be used. If the power cord is damaged, it must be replaced by the manufacturer, its service agent, or similarly qualified persons in order to avoid a hazard. Contact

(833.800.8669) or (help@sihomecomfort.com) for further instructions about replacement and repair.

- Risk of fire. Your appliance may be equipped with a detachable power supply or a cord/plug with a safety device such as a fuse. Use only the power cord and plug provided.
- Before plugging power cord into electrical outlet, be sure that all electrical information on the rating label, including voltage, is compatible with your outlet's power supply.
- Never use the cord as a handle or otherwise yank, strain or stretch the power cord.
- Do not sit or stand on product.
- Do not set anything on product or use as table or shelf.
- While the product is plugged in, do not insert or allow foreign objects to enter any input or output opening as this may cause risk of electric shock or fire, or damage the product.
- A loose fit between wall outlet (receptacle) and plug may cause overheating and distortion of the plug. Discontinue use of the product in this outlet. Contact a qualified electrician to replace loose or worn outlets.
- This appliance has a polarized plug (one blade is wider than the other.) To reduce the risk of electric shock, this plug is intended to fit in a polarized outlet only one way. If the plug does not fit fully in the outlet, reverse the plug. If it still does not fit, contact a qualified electrician. Do not attempt to defeat this safety feature.
- Before moving, repositioning, servicing, cleaning and when not in use, use the product controls to turn off the power and then unplug. To disconnect from outlet, grasp and pull only the plug. Also, power off and unplug if the product will be left unattended for an extended period of time or during electrical storms.

SERVICING WARNING—To reduce risk of fire, electrical shock and injury to persons, observe the following:

- Clean your product regularly, only as is instructed in this manual. Prior to cleaning, turn off the power on your product and unplug. Do not use gasoline, thinners, solvents, ammonias or other chemicals for cleaning. Refer to the CLEANING instructions provided.
- Do not open appliance housing while product is plugged in. To avoid risk of shock, all service and/or repairs must be done by contacting (833.800.8669) or (help@sihomecomfort.com).

FCC Compliance Statement

This device complies with Part 15 of the FCC Rules. Operation is subject to the following two conditions: (1) This device may not cause harmful interference, and (2) this device must accept any interference received, including interference that may cause undesired operation.

NOTE: This equipment has been tested and found to comply with the limits for a Class B digital device, pursuant to part 15 of the FCC Rules. These limits are designed to provide reasonable protection against harmful interference in a residential installation. This equipment generates, uses and can radiate radio frequency energy and, if not installed and used in accordance with the instructions, may cause harmful interference to radio communications. However, there is no guarantee that interference will not occur in a particular installation. If this equipment does cause harmful interference to radio or television reception, which can be determined by turning the equipment off and on, the user is encouraged to try to correct the interference by one or more of the following measures:

- Reorient or relocate the receiving antenna.
- Increase the separation between the equipment and receiver.
- Connect the equipment into an outlet on a circuit different from that to which the receiver is connected.
- Contact Customer Service or dealer or an experienced radio/TV technician for help.

This Class B digital apparatus complies with Canadian ICES-003.

Changes or modifications not expressly approved by the party responsible for compliance could void the user's authority to operate the equipment.

Supplier's FCC Declaration of Conformity

Unique Identifier: Sharper Image Model PURIFY 9

Responsible Party: Vornado Air LLC

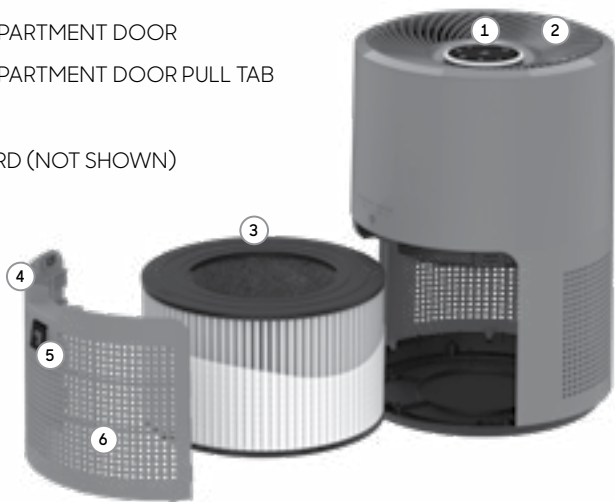
Mailing Address: 415 E. 13th St., Andover, KS 67002

Contact: www.sihomecomfort.com

SAVE THESE INSTRUCTIONS

PRODUCT INFORMATION

- 1 CONTROL PANEL
- 2 OUTLET GRILL
- 3 TRUE HEPA FILTER CARTRIDGE
- 4 FILTER COMPARTMENT DOOR
- 5 FILTER COMPARTMENT DOOR PULL TAB
- 6 AIR INLET
- 7 POWER CORD (NOT SHOWN)



CONTROL PANEL



 LIGHT ON / OFF

 AUTO MODE

 SLEEP MODE

 DECREASE FAN SPEED

 FAN SPEED INDICATOR

 INCREASE FAN SPEED

 FILTER REPLACEMENT

 FAN ON / OFF

HOW TO USE

GETTING STARTED

Upon plugging in your air purifier and powering on, all lights on the Control Panel will briefly illuminate to verify functionality.

POWER ON/OFF

Press the power button to turn the Purify 9 ON or OFF. The product will remember and resume the user's last settings.

PANELS LIGHTS ON/OFF

This feature enables the user to turn the panel lights ON or OFF. Press the Panel Light button to turn this feature ON or OFF. The Panel Light button will turn orange to indicate that the feature has been engaged. Immediately after activation, the entire panel will go dark. A touch to any button will wake the Control Panel and allow for setting adjustments before dimming again.

AIRFLOW ADJUSTMENT

To select one of the airflow settings, press the "+" button to adjust to a higher speed or press the "-" button to adjust to a lower speed. The number tells you what speed you are on.

NOTE: Dust and allergens are most airborne when persons and pets are active in the room. For best results, set the unit on a higher speed setting during these times for high demand cleaning and circulation. Set the unit to a lower setting for quieter operation when activity is reduced.

AUTO MODE

The Purify 9 will continuously monitor the air quality of the room to detect the presence of particles and gases/odors. In Auto Mode, the fan speed will adjust speeds as needed to maintain optimum air quality depending on the detection of particles and gases/odor in the air.

When to Use: This feature allows the unit to reduce energy usage when fewer airborne contaminants are present in the room. Because active people and pets tend to stir up airborne particles and odors, the unit will tend to increase speed during peak periods of activity in the room until lower readings are obtained. This feature is ideal for rooms where activity fluctuates greatly based on the time of day. Press the Auto Mode button to turn this feature ON or OFF. The Auto Mode icon will turn orange to indicate that Auto Mode is active.

SLEEP MODE

This feature senses room light conditions, and automatically adjusts the unit to the lowest speed setting when in no or low light. In regular light, the unit will operate at the previous setting. Higher and more powerful speeds may be used throughout the day with lower speeds and minimal noise being preferable at night. Press the Sleep Mode button to turn this feature ON or OFF. The Sleep Mode icon will turn orange to indicate that Sleep Mode is active.

NOTE: When Auto Mode and Sleep Mode are both engaged and the product is in a low light setting (i.e. nighttime) the product will only operate on the lower speeds 1 through 3 to ensure the unit is providing a consistent, low noise level during nighttime sleep.

FILTER AND REPLACEMENT

Your product is equipped with a Filter Replacement indicator light to show when it is recommended to change the filter. Please refer to FILTER REPLACEMENT for instructions. This feature is controlled by time of use. The light will illuminate after 4,500 hours of run time has accumulated.

NOTE: User environments will differ. The filter replacement time is based on average use situations, if you are using the air cleaner in a more demanding environment, you may need to change your filter more frequently. In less polluted environments the filter life may extend beyond the notification.

VISUAL AIR QUALITY INDICATOR

Your product is equipped to give you visual feedback of the air quality in your room. The color ring displays the air quality in real-time, making your once invisible concerns visible.



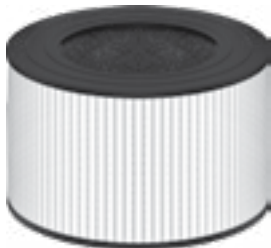
VISUAL AIR QUALITY INDICATOR

GREEN - Good Air Quality
YELLOW - Moderate Air Quality
RED - Poor Air Quality

TRUE HEPA FILTRATION

Without properly calibrated airflow, products with a True HEPA Filter will not achieve their full filtration potential. Gaps, poorly sealed filter housings, and excessive air velocity all reduce the effectiveness of the product. Independent testing laboratory verifies that the precise calibration of a Sharper Image Air Purifier allows it to perform at True HEPA standards.

Maintain the high efficiency of your Sharper Image Air Purifier by regularly replacing used filters with fresh new ones. Your Sharper Image Air Purifier will indicate with an illuminated filter replacement icon when it is time to change the filter cartridge. To purchase replacement filter cartridges, please email help@sihomecomfort.com or call 1-833-800-8669.



Part # **MD1-0046**

FILTER REPLACEMENT

GENUINE SHARPER IMAGE FILTERS ARE RECOMMENDED

Peak performance is only realized when genuine Sharper Image True HEPA filters are used. Others may claim to be compatible with Sharper Image units, but the Sharper Image Air Purifier is calibrated to achieve a 99.97% capture rate of particles 0.3 microns or larger, only when used with Sharper Image Filters.

HOW TO REPLACE YOUR FILTERS

1. Turn off and unplug unit.
2. From the back of the product, remove the Filter Compartment Door.
3. Locate one of the Filter Pull Tabs and pull to remove the Filter from the product.
4. Discard used Filter.
5. Wipe down the inside and outside of the product with a soft, damp cloth.
NOTE: Do not use gasoline, thinners, solvents or other chemicals for cleaning.
6. Dust or vacuum the top air outlet and the air inlets on the inside and outside of the product.
7. Replace with a genuine Sharper Image Purify 9 True HEPA Filter, pressing firmly to ensure filter is fully positioned inside unit.

8. Replace Filter Compartment Door.
9. To reset the Filter Replacement Indicator, press and hold (filter replacement graphic) for approximately 3 seconds until the indicator light has turned off.

NOTE: Take care to remove any plastic bag covering from your replacement filter. Do NOT operate your Air Purifier without a filter.



TIPS

1. Keep retail carton to store unit when not in use.
2. Use the inset handle located on the back of the unit for easy carrying.



3. For best results, position the front of the unit towards the center of the room, leaving at least a 6 inch distance away from walls or furniture on every side.

NOTE: For optimum airflow, air outlet should be unobstructed. Ensure curtains and other items are far enough away from the unit to not be pulled into the side inlets or interfere with airflow.

CLEANING & STORAGE

HOW TO CLEAN

Because large volumes of air pass through your Air Purifier each day, it will need regular cleaning.

1. Turn unit off and unplug before cleaning.

NOTE: Do not use gasoline, thinners, solvents or other chemicals for cleaning.

2. Wipe down with a soft, damp cloth.
3. Dust or vacuum the top air outlet. It is recommended to clean the interior when the Filters are changed.

The motor is permanently lubricated so it needs no service. No other serviceable parts, other than Filters, are contained within the unit.

STORAGE

Follow the steps listed below when you are ready to store your unit.

1. Unplug power cord and bundle loosely.
2. Cover, or place back in retail carton if available. This will prevent unit from accumulating dust over time.
3. Store unit in cool and dry location.

TROUBLESHOOTING

PROBLEM

POSSIBLE CAUSE AND SOLUTION

<p>The unit fails to power on.</p>	<p>Unit is not plugged in. Plug power cord into electrical outlet.</p> <p>Household circuit breaker/ground fault circuit interrupter has tripped or blown fuse. Reset circuit breaker/ground fault circuit interrupter, or replace fuse. For assistance, contact licensed electrician.</p> <p>Unit is damaged or in need of repair. Cease usage and unplug. Contact Consumer Service for assistance.</p>
<p>Airflow is weak or slow.</p>	<p>Unit set to a low speed setting. Adjust to a higher speed setting.</p> <p>Debris build-up on filter. Check and replace Filter.</p> <p>Airflow is blocked. Remove obstruction.</p> <p>Replacement filter is wrapped in polybag. Check filter to ensure all plastic packaging is removed before use.</p>

3

YEAR

SATISFACTION
GUARANTEE

WARRANTY

If you're not satisfied with this product, let us know.

Vornado Air, LLC warrants to the original consumer or purchaser this Sharper Image® Air Purifier ("Product") is free from defects in material or workmanship for a period of three (3) years from the date of purchase. If any such defect is discovered within the warranty period, Sharper Image, at its discretion, will repair or replace the Product at no cost.

For warranty or repair service: Call 833-800-8669 or email help@sihomecomfort.com to obtain a Return Authorization ("RA") form. Please have or include your Product's model number and serial number, as well as your name, address, city, state, zip code and phone number when contacting Vornado for warranty service.

After receiving the RA form, ship your Product to: Vornado Air LLC Attn: Warranty & Repair 415 East 13th Street Andover, KS 67002. For your convenience, please have your model number and serial number when contacting Vornado with service inquiries. To assure proper handling, packages must be clearly marked with the RA number. Packages not clearly marked with the RA number may be refused at the receiving dock. Please allow 1-2 weeks for repair and return of your Product after the Product is received.

Repairs not covered by the warranty or outside the warranty period will require a fee to cover the cost of materials, labor, handling and shipping.

This warranty does not apply to defects resulting from abuse of the Product, modification, alteration, mishandling, improper maintenance, commercial use or repair or service of the Product by anyone other than Vornado; damages which occur in shipment or are attributed to acts of God. Improper product use, which includes using

an external device that alters or converts the voltage or frequency of electricity, or shipping a Vornado product to a country not intended for use will void all warranties. Any unauthorized product modification, repair by unauthorized repair center, or use of non-approved replacement parts is not recommended and any consequences will not be covered by support services or product warranties. The product warranty will be honored only on models that are being used in the country intended. REPAIR OR REPLACEMENT AS PROVIDED UNDER THIS WARRANTY IS THE EXCLUSIVE REMEDY OF THE CONSUMER. VORNADO SHALL NOT BE LIABLE FOR ANY INCIDENTAL OR CONSEQUENTIAL DAMAGES FOR BREACH OF ANY EXPRESS OR IMPLIED WARRANTY ON THIS PRODUCT. EXCEPT TO THE EXTENT PROHIBITED BY APPLICABLE LAW, ANY IMPLIED WARRANTY OF MERCHANTABILITY OR FITNESS FOR A PARTICULAR PURPOSE ON THIS PRODUCT IS LIMITED IN DURATION TO THE DURATION OF THIS WARRANTY. Some states do not allow the exclusion or limitation of incidental or consequential damages, or allow limitations on how long an implied warranty lasts, so the above limitations or exclusions may not apply to you. This warranty gives you specific legal rights, and you may have other rights that vary from state to state. The manufacturer assumes no responsibility for damage caused by failure to follow these instructions or improper product use. Any such actions will invalidate the product warranty.

All company names and product names are trademarks of their respective owners. © All rights reserved. All technical information, data, and instructions for the installation, connection, and operation contained in these instructions for use correspond to the latest available information at time of printing. The contents of this manual may differ slightly from the actual product. Observe any additional supplements.

©2021 Vornado Air LLC, Andover, Kansas 67002 USA.
Specifications subject to change without notice.
Sharper Image® name and logo are registered trademarks.
Manufactured, marketed and distributed under license by Vornado Air LLC, Andover, Kansas 67002.
Manufactured in China.
U.S. Patents Pending.

Sharper Image® Distributed under license by Vornado Air LLC, Andover, Kansas 67002.

SHARPER IMAGE®

833.800.8669 | sihomecomfort.com | help@sihomecomfort.com